

Practical design, period appeal

A 1930 Spanish Revival house finally gets the stylish, high-performance kitchen it deserves

By JILL CONNORS + Photographs by JOHN ELLIS



↑
The wide cascading arch leading to the dining room echoes an existing one in the house.

←
Decorative paint accents mimic original designs found on beams in the living room.

It's tried-and-true advice: Live in a space for a while before you remodel it. For Alicia and Craig Collins, waiting a long while (11 years!) seems to have paid off big-time. The couple put up with the shoddy galley kitchen in their 1930 Spanish Revival-style house for over a decade. Bad enough were the worn cabinets and awkward layout, but the room also lacked the kind of details found throughout their home, which has arched doorways, wrought-iron work, and an art-tile fireplace surround. Alicia, an avid cook, craved a top-notch range, and with the family having grown to include three children, they needed more food storage. Kitchen designer Dana Jones's solution delivered both without adding on. By incorporating a butler's pantry—just one cabinet and a swinging door between the kitchen and the dining room—she gave the room an extra 50 square feet, allowing for more counter space, a snack peninsula, two sinks, an alcove for the pro-style range, and a double refrigerator-freezer. But as much as they like their new conveniences, the Collinses also love the new kitchen's old-style architectural details: two cascading archways that mimic an original in the entry hall, era-appropriate triple-arched casement windows, and painted scrollwork. Says Craig, "We finally have a kitchen that measures up to the other parts of the house."



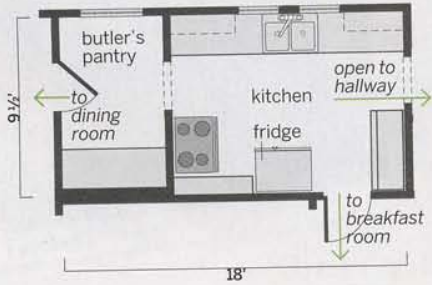
{before}

before The old bare-bones kitchen led to a butler's pantry at one end and a hall outside the laundry at the other (above).
after Annexing the pantry allowed for a longer countertop with two sinks and a breakfast bar, and a 60-inch refrigerator. Faucets: Kohler. Sinks: Rohl. Fridge: Liebherr



before

The freestanding stove and refrigerator had no adjacent counter space; a butler's pantry added two extra doorways.



lots more ideas

See how other homeowners solved their kitchen design problems at thisoldhouse.com/bonus

after

The kitchen now opens up to the dining room via a wide arch; it has a long counter and small breakfast bar. The range alcove lines up with the fridge for a clean look.

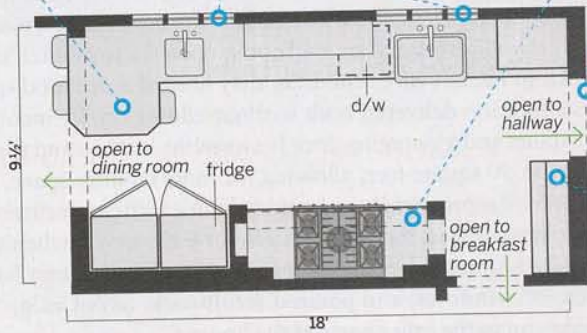
1 Annexed the butler's pantry that led to the dining room, removing one wall and creating a wide archway in the other. This made space for an extended counter and breakfast bar on one side and a 60-inch fridge on the other.

2 Replaced the windows

with identical sets of triple-arched casement models that echo arches throughout the house.

3 Added more arches. The doorway to the adjacent hallway is a simple Roman curve; the alcove for the range is a cascading arch.

4 Built in a hutch with a serving counter along the entry to the breakfast room.



• the key details

↓ **New architectural details**, such as the curved brackets beneath the upper cabinets and the pull-open casement windows, suit the Spanish Revival style of the 1930 house.



↑ **Wine storage** built in under the counter keeps bottles at the ready (and corks moist) for when the couple entertains.



← **A built-in hutch** on the way to the breakfast room features a plate rack, beadboard back panel, mahogany serving counter, and cascading-arch detailing. Upper shelves keep Alicia's cookbooks within easy reach. *Cabinets (custom): Crest Woodworks*

↓ **Grooves in the soapstone** create an integral drainboard; they're graded to encourage water to run into the basin.



↑ **The farmhouse sink** is a period-appropriate choice, and its deep basin conceals dirty dishes. The arched casement windows' soapstone sill is both handsome and practical. *Sink: Rohl. Faucet: Kohler. Subway tile: Ken Mason Tile/BCIA. Cabinet knobs and pulls: Restoration Hardware. Windows (custom): JT Windows*



homeowner tip CRAIG COLLINS, SOUTHERN CALIFORNIA

"Stay flexible. We originally planned a tiled floor but decided to keep the original fir when it was uncovered under layers of linoleum. The tile 'rug' we designed became our stove backsplash."